



Whingate Primary School

Co-Headteachers:
Claire Beswick and
Karen Loney
Chair of Governors:
Mrs Ellis Lewis



Welcome to Whingate Primary School!

Page	Handbook Contents
2	Parents as Partners
2	Helping your child at home
3	Contact details
3	School day
4	School dress
5	PE clothing
5	Jewellery
6	Care of Children
6	A safe school
7	Medicines
7	Photographs and videos
8	School meals
9	Attendance
9	Concerns and complaints
9	Educational visits
10	Anti-Harassment policy
11-15	Curriculum
15-16	Special Educational Needs
16	Support for Good Behaviour
16	Fundraising
17	Organisation of school



Parents as Partners

Through the home school agreement as a school we will:

- Send communication through the school Class Dojo, the Website and messages.
- Put a school Newsletter every term on to the website and Class Dojo.
- Put on Class Dojo regular Class Newsletters and updates.
- Invite you to two parents' evenings during the year or a phone call, to discuss your child's progress.
- Send a typed report at the end of the school year.
- Invite you to special events, such as our Christmas Celebration, Class Assemblies etc.
- Invite you to occasional meetings about reading, curriculum, residential trips, tests etc.
- Invite you to courses about helping your child.
- Encourage your child to reach their potential at all times.

As parents/carers you agree to ensure your child/children will:

- Attend school every day and on time. See the website for clear expectations and guidance.
- Wear the correct uniform.
- Follow the schools' behaviour policy.

You also agree to:

- Attend parents' evening or answer a call from the teacher.
- Support with the completion of reading and homework that is set.
- Pay in advance for school dinners through ParentPay.
- Talk to your child's teacher if there is a concern.

Helping Your Child at Home

Your child will progress faster and further in school with your encouragement, help and support.

Your interest:

The most important contribution is in showing a constant interest in what your child is doing at school. You can help this at home by encouraging reading, practising times tables, counting, learning spellings and talking about what your child has learnt during the school day.

Make sure that your child brings in spelling, literacy, mathematics and reading homework on time and done. This will support the children's learning and progress during their time at school.



Your Contact Details

It is important that we have details of where we can contact you during the day. It is essential that we have the address and telephone number of someone willing to take responsibility for your child in case of accident, illness or unforeseen circumstances and we are unable to contact you. Please make sure that you provide us with at least 2 emergency contact numbers and make any changes through the ARBOR parent app#.

The School Day

(The gates open at 8:30 and morning work starts promptly at 8:35am. Gates close at 8:55am)

For Reception & Y1

Morning session:
8.35am to 11.40am

Afternoon session:
12.30pm to 3.10pm

For Y2.Y3

Morning session:
8.35am to 12pm

Afternoon session:
12.50pm to 3.10pm

For Y4, Y5 & Y6

Morning session:
8.35am to 12.20pm

Afternoon session:
1.10pm to 3.10pm

Milk:

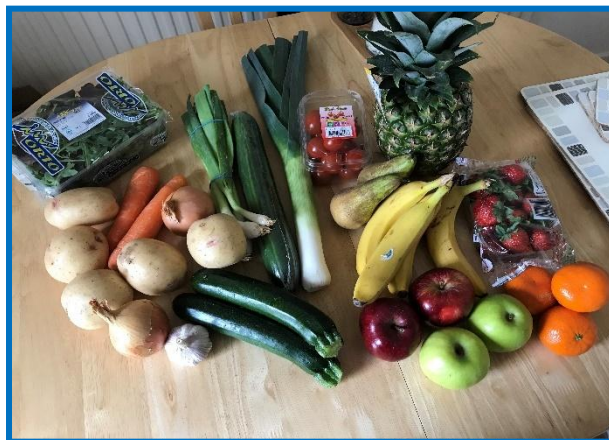
Children throughout school may choose to drink milk during the morning - for children not in receipt of pupil premium there is a charge of £21 a year or £7 per term for this; from the day that the child turns 5 years old. You will be informed of how to order milk each term and how to pay on ParentPay.

Water:

We are a water only school. Please send in a labelled bottle for your child to access water daily.

Fruit:

Children in Nursery, Reception, Year 1 and Year 2 are given fruit each day.





School Dress

Sweatshirts / cardigans / jumpers:	<u>NAVY BLUE ONLY</u> (Black for Year 6 only)
Blouses / shirts / polo-shirts:	white/ <u>navy</u> blue
Skirts / trousers / shorts:	navy, grey or black

Cycling shorts, leggings and jogging bottoms are not school uniform and should only be worn for PE.
Summer dresses for girls can also be in blue only.

Uniform can be purchased from the website following the link:

<https://myclothing.com/whingate-primary-school/27361.school>

Uniform Exchange

The Leeds Uniform Exchange is a scheme set up to help families pass on good quality items of uniform that are no longer needed and, instead of buying new, find items of uniform, for free!

The easiest way to request items of uniform is to visit their webpage- please click on the link below.

<https://leedsuniformexchange.org.uk/places/l12-uniform-scheme/>

Alternatively, please speak to Mrs Woods who will be able to assist with your requests.

Jogging bottoms, leggings, jeans, rugby or football tops etc are not acceptable replacements for school uniform.

Footwear:

As soon as children enter the cloakroom, they must change out of their outdoor shoes into indoor footwear (pumps, trainers) **NO SLIPPERS/Crocs etc**

. This helps maintain the cleanliness of the building.

All clothing must be labelled



Year 6 are the ONLY year group to wear BLACK



PE

A PE kit is required in school at all times; each year group has a set time for PE.

Indoor Kit

Shorts - Navy blue or black
White t-shirt
Leotard - Blue or black

Outdoor Kit

Tracksuit/leggings - Plain Black/Blue
Trainers

No Logo's or patterned leggings/joggers as an alternative.

All clothing must be labelled and placed in a pump bag.



Pumps only, no **SLIPPERS/Crocs**. Please label your child's pump bag.

Jewellery and Accessories

The policy of WPS is that, in the interests of safety, children should not wear jewellery in school. If your child has pierced ears, we permit **simple plain studs** which do not protrude or hang loosely. **It is not appropriate for children in primary school to have piercings anywhere other than ears.**

Jewellery is not allowed - jewellery should be removed prior to a physical education lesson due to the increased risk of it becoming caught or causing injury to the wearer or fellow learner. The wearing of any jewellery increases the risk of injury significantly.

No taping of piercings is allowed - as the taping of earrings 'creates a perception of safety and is not recommended', as there have been several incidences nationally where children's ears have been injured from earrings being pulled out from under the tape.

WPS does **not** allow children to wear:

- Make-up/Acrylic nails or any type of false nails
- Large headbands/hair accessories (including coloured hair pieces/extensions) See the website for guidance on the 'Halo Code' for children with Afro-textured hair. Any weave, braids, scarves etc to be school colours blue and white only.



Care of Children

Security: All gates are locked during the day and access can only be gained through the main front door where all visitors have to report to. Visitors staying in school have to show relevant ID and have a current DBS, they are also asked to wear a visitor's badge.

Car Park: The car park is for staff to park only, and we ask that parents and carers park a safe distance away from the school. We ask that when parking car engines are switched off and not left idling.

A Safe School

We aim to provide a safe and secure environment for children, staff and visitors. The following is a list of practical considerations we ask all parents to note.

Coming into school during the school day:

Please call at the School Office first and make your presence known to the office staff or in their absence, the Co-Headteachers, Assistant Headteacher, Senior Leadership Team or the Business Manager.

Taking your child out of school for a dental/medical appointment etc:

Please can you provide a letter or appointment card as proof.

A relative or friend coming into school to collect or speak to your child:

Please let us know beforehand and remind the person concerned to make him/herself known in the office.

Dogs must **not** be brought into the playground or into school even if carried.

The school - both the building and grounds - is **a no smoking/vaping site**.

Bikes and scooters are not to be ridden on school grounds. They can be locked up near the entrance to school and collected when leaving.

If ever the behaviour or demeanour of anyone in the vicinity of school causes you to have concerns for the safety of the children, please let us know.

We will not tolerate inappropriate or aggressive behaviour directed towards staff, children or any adult.

A copy of our Child Protection Policy can be found on our website or through the link <https://www.whingate.com/attachments/download.asp?file=118&type=pdf>





Medicines

We have a medical conditions policy in school for prescribed medicines, tablets and creams. Parents/carers must fill in a parental agreement form in order for one of our first aid staff to administer the medicine to your child.

We are an asthma friendly school and promote children using their inhalers when needed independently. Inhalers are kept as near to the child as possible usually in the stock cupboard in the classroom, and therefore no parental agreement form is needed, however the school asthma plan needs to be completed. Inhalers must be clearly named and instructions of use given to the teacher. If you want your child to receive an emergency inhaler on the occasion your child does not have theirs a parental agreement form will need to be signed.



Photographs and Video

Photographs and videos can be taken on the understanding that they must be purely for family use- no photographs or videos should be placed on the internet or published anywhere else.





School Meals

Dinners:

These are operated through the School Grid system. There are usually 3 choices; red is meat, yellow is either fish or vegetarian and green is always vegetarian. All meals are prepared and cooked on site. Parents/Carers can log onto the system and choose the meal for their children (for the week or the day), or in the morning the teacher will explain the choices for that day and the child can choose what meal they want. At lunchtime, the child will find their name on the tablet and select the meal chosen.



Since September 2014 children in Reception, Year 1 and Year 2 have had the opportunity to have a Universal Free School meal.

Payment for school meals is due in advance on the first day of each week. The payment will be an online payment through ParentPay (see the office for more details).

It is essential that payment is prompt and that you do not get into arrears. *It is not the schools' responsibility to provide a lunch for your child.*

If your child/children are entitled to free school meals, please speak to the office staff for details.

One weeks' notice is needed for children to change from school dinners to packed lunches and we are unable to offer mixed meal patterns. **If your child brings a packed lunch ensure that you do not include sweets, chocolate or fizzy drinks. We are a healthy school and only drink water or milk through the day.**





Attendance

If your child is ill phone the school office by 8:45am on the first morning of the illness. If you do not a member of school staff will contact you either through a phone call, text or home visit.

Please let us know about dental/medical appointments which may mean your child missing all or part of a session. If your child needs to attend a medical appointment during school hours, please provide proof at the school office and then 'sign in / sign out' as appropriate.

Children should not be absent for family holidays during term time, this will be unauthorised and depending on number of sessions missed result in a Fixed Penalty Fine.

Attendance at school is vital, you need to make sure that your children are in school every day and on time. If your child/ren's attendance falls below 96% their attendance will be closely monitored and meetings will be organised to discuss reasons. We have a Late policy (see the website) for children who are not collected on time, which can include fining.

Concerns and Complaints

If you are concerned about an issue, or are dissatisfied with an aspect of school, you should raise this initially with the member of staff who is directly involved, usually the class teacher. Please pick a suitable time for this.

If you feel that the matter is unresolved or is serious, you should contact a member of the Senior Leadership Team or one of the Co-Headteachers.

The Whingate's Complaints Policy is available from the School Office.

Educational Visits and the Charging Policy

Educational visits take place largely in school time and are planned to enrich the curriculum on offer. Parental permission to take part is sought if the visit is away from the immediate locality of the school. Educational visits usually involve a charge for transport and sometimes admission and on these occasions all parents of children taking part are asked to make a voluntary contribution towards the cost. **If insufficient voluntary contributions are received the visit may not take place and all contributions are then returned.**





Anti-Harassment Policy

At Whingate we believe that all pupils have an equal right to the best possible education. We believe that every child and adult should work in a happy and safe environment. We are opposed to any form of prejudicial behaviour.



All adults in school are aware of the anti-harassment and give a high priority to dealing with every incident of unacceptable behaviour. All incidents of prejudicial behaviour will be investigated thoroughly. All parents and visitors to the school are expected to maintain the highest standards of behaviour and support our anti-racist stance.



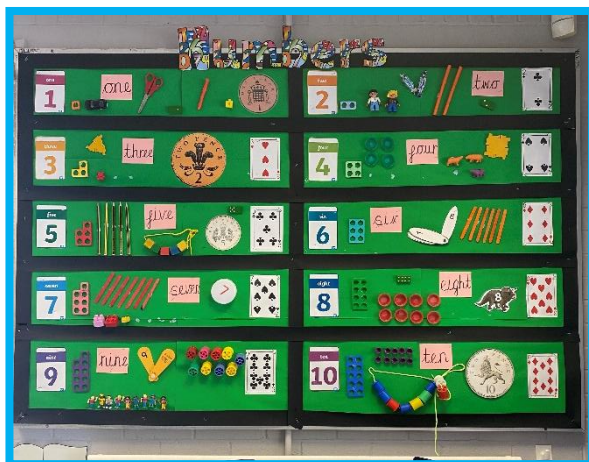


Curriculum



Whingate Primary School ensures that the children have a broad and balanced curriculum that challenges and evokes conversation and debate. The topics covered give the children opportunities to learn new skills and gives them chances to apply skills already taught.

At the end of every term the teachers assess and analyse data related to the progress of the children in their class in reading, writing and mathematics. Six times a year all class teachers participate in pupil progress meetings where they discuss progress and expectations with members of the Senior Leadership Team.





The Curriculum

We want our children to leave our school with great memories; to have developed in to happy, caring and resilient young people. We want our children to feel empowered to achieve their very best and to change the world for the better. We want our children to be inspired and we want their dreams to come true.

What does our Curriculum look like?

Reading, writing and mathematics are taught across school using the Early Years Framework, National Curriculum, plus additional schemes, including White Rose Maths Hub, Spelling Shed and Doodle maths.

Curriculum Intent Statements

ART

At Whingate Primary School Art should be fully inclusive to every child. Our aims are to: fulfil the requirements of the National Curriculum and Early Years Foundation Stage for Art, provide a broad and balanced curriculum, ensure the progressive development of knowledge and skills, enable children to observe and record from first-hand experience and from imagination, develop the children's competence in controlling materials and tools, acquire knowledge and become proficient in various art and design techniques and processes, begin to develop an awareness of the visual and tactile elements including; colour, pattern and texture, line and tone, shape, form and space, foster enjoyment and appreciation of the visual arts and develop a knowledge of significant artists and designers, increase critical awareness of the roles and purposes of art and design in different times and cultures, and to develop a cross-curricular approach to the use of Art in all subjects.

HISTORY

Our aim at Whingate is to encourage pupils to develop an appreciation and understanding of the past, evaluating a range of primary and secondary sources. At Whingate we make full use of resources within the immediate and wider local area enabling children to develop a deep understanding of the history of their locality. Pupils will be taught to make links between areas of learning, with the aim of developing engaged, motivated and curious learners that can reflect on the past and make meaningful links to the present day.

The history curriculum has been designed to cover the National Curriculum and Development Matters in the EYFS whereby schools must provide a balanced and broadly-based curriculum which promotes the spiritual, moral, cultural, mental and physical development of pupils and prepares them for the opportunities and responsibilities and experiences for later life.

COMPUTING

At Whingate our intention is to enable children to find, explore, analyse, exchange and present information through computing. We wish to provide a high-quality education in computing and develop a love of the subject to prepare them for the future world of work.

With regards to online safety, we intend our children to recognise what information is personal to them, and who, when and where it is safe to share it. We want our pupils to understand that there is always a choice with using technology and as a school we utilise technology to model positive use. We recognise that the best prevention for a lot of issues we currently see with technology/social media is through education.

We want children to know more, remember more and understand more in computing so that they leave primary school computer literate, enabling them to be active participants in a digital world. We do this by giving them. Computing skills are a major factor in enabling children to be confident, creative and independent learners and it is our intention that children have every opportunity available to allow them to



achieve this. As AI continues to develop, we are teaching the children how to safely navigate and identify what is fake and what is real.

DESIGN TECHNOLOGY

At Whingate Primary School we believe that it is important that children are given the opportunity to explore a Design and Technology curriculum with a resilient and resourceful approach, whilst being taught to reflect upon their own learning. Our Design and Technology curriculum will inspire children to succeed through a broad range of practical activities and learning opportunities which encourage them to identify problems and take risks to create solutions. Children will be motivated to become innovative designers and have an ambitious attitude towards the wider world, whilst adopting skills from our Whingate Superheroes.

GEOGRAPHY

Whingate Primary School's geography curriculum is designed to teach learners geographical knowledge and skills through the context of the school's personalised aims: communication, live healthily, accept and respect, understand the wider world, dream big and explore. Geography at Whingate follows the National Curriculum giving our children opportunities to explore their surroundings, communities and wider geographical issues through engaging lessons coupled with exciting opportunities, both theoretical and practical. We recognise the importance of raising children as responsible, curious thinkers who are able to process new information, reflect on it, think critically, and apply knowledge and skills to overcome challenges in our ever-changing world. Understanding both human and physical geography will enable our children to have a better understanding of themselves and the wider society they live in as they grow up to be caring, responsible adults who can influence the future of our planet.

MATHS

That our children will:

- become fluent in the fundamentals of mathematics.
- develop conceptual understanding and the ability to recall and apply knowledge rapidly.
- be able to reason and problem solve by applying mathematics to a variety of increasingly complex problems.
- build upon and consolidate their knowledge and understanding
- develop resilience that enables them to reason and problem solve with increased confidence.
- be able to apply and further consolidate their mathematical understanding across a range of other subjects.

MUSIC

We aim for children to gain a firm understanding of what music is through listening, singing, playing, evaluating, analysing, and composing across a wide variety of historical periods, styles, traditions, and musical genres. The aim for our children is to develop a curiosity for the subject, as well as an understanding and acceptance of the validity and importance of all types of music. We are committed to ensuring children understand the value and importance of music in the wider community and are able to use their musical skills, knowledge, and experiences to involve themselves in music, in a variety of different contexts.

PHYSICAL EDUCATION

Whingate Primary School intends on promoting the importance of leading an active lifestyle through our engaging, high-quality curriculum that supports both the physical and emotional development of our pupils. Our vision is to empower all children to become life-long participants of physical activity, whilst ensuring that they have the skills to make healthy life choices independently. We also want to teach our children



how to stay safe such as learning how to swim and make sensible decisions around water. We want our pupils to gain the confidence in performing a variety of skills needed to participate in a wide range of sports and be given opportunities to utilise these competitively. Our safe and supportive environment encourages children to cooperate and contribute actively and learn to work as part of an effective team.

PSHE

Whingate Primary School's PSHE curriculum aims to equip our children with the skills and attributes then need to be healthy, responsible citizens who are able to make decisions about their future, have high aspirations and care for others. We place a strong emphasis on nurturing children's social, emotional and moral development to enable our pupils to thrive in a diverse society and take responsibility for their future lives.

READING

At Whingate Primary School we provide pupils with a high-quality education in English that teaches pupils to speak, read and write fluently so that they can communicate their ideas and emotions to others effectively. Phonics is high priority and is emphasised in the early teaching of reading to beginners when they start school. Fluency in reading will be developed once children are secure in their phonics knowledge. All children are given the opportunity to read with an adult to progress their fluency. In these initial stages of learning to read, children will be read to regularly by adults in school to provide a model of fluent reading, engage in book talk, and to begin to develop a love of reading. We encourage all pupils to read widely across fiction, poetry and non-fiction to develop their knowledge of themselves and the world in which they live, to establish an appreciation and love of reading, to gain knowledge across the curriculum, and to develop their comprehension skills. Children have daily teaching or provision of reading from Nursery to ensure that their fluency, vocabulary and comprehension skills are routinely and consistently enhanced. We strongly believe that every member of staff should be confident in their delivery of phonics and reading skills. We support new and experienced staff in becoming reading experts through training, research and regular discussions with our reading team. It is our intention to ensure that, all pupils can read fluently, with confidence, in any subject, developing a love for reading that continues in later life.

RELIGIOUS EDUCATION

At Whingate Primary School, we believe that it is important for all our pupils to learn from and about religion, so that they can understand the world around them. The aim of Religious Education in our school is to help children to acquire and develop knowledge and understanding of Christianity and the other principal religions represented in Great Britain; to appreciate the way that religious beliefs shape life and behaviour, develop the ability to make reasoned and informed judgements about religious and moral issues and enhance their spiritual, moral, social and cultural development. Religious Education is taught throughout the school in such a way as to reflect the overall aims, values, and philosophy of the school, through topics such as 'Why do we care about people?' and 'What is compassion?' It plays an important role, along with all other curriculum areas, particularly PSHE, in promoting social awareness and understanding in our children. We encourage our pupils to ask questions about the world and to reflect on their own beliefs, values and experiences. Our curriculum is designed to encourage creativity, imagination, enquiry, debate, discussion and independence.

SCIENCE

Whingate Primary School's science curriculum is designed to teach learners scientific enquiry skills and scientific knowledge through the context of the school's personalised aims: communication, live healthily, accept and respect, understand the wider world, dream big and explore. Science at Whingate follows the National Curriculum giving our children opportunities to explore their surroundings, communities and



wider scientific issues through engaging lessons coupled with exciting opportunities, both theoretical and practical. We recognise the importance of raising children as responsible, curious thinkers who are able to process new information, reflect on it, think critically, and apply knowledge and skills to overcome challenges in our ever-changing world. Having a wider understanding of the three science strands and the ability to become enquiry-based learners will enable our children to have a better understanding of themselves and the wider world they live in as they grow up. In doing this we aim to develop children's natural curiosity and excitement to pursue scientific enquiry, now and in the future.

SPANISH (KS2)

The intention of the Spanish curriculum at Whingate Primary School is for children to develop an interest in learning other languages in a way that is enjoyable and stimulating. We encourage children's confidence and creative skills. We strive to stimulate and encourage children's curiosity about language. We help children develop their awareness of cultural differences in other countries. We strive to embed the skills of listening, speaking, reading and writing skills necessary to enable children to use and apply their Spanish learning in a variety of contexts and lay the foundations for future language learning.

RELATIONSHIP, HEALTH AND SEX EDUCATION

At Whingate, RHSE (Relationship, Health and Sex Education) forms a part of the PSHE curriculum. RHSE will put in place the building blocks needed for positive and safe relationships, including those with family, friends and online. Health Education aims to give pupils the information they need to make good decisions about their own health and wellbeing, to recognise issues in themselves and others, and to seek support as early as possible when issues arise.

SEND (Special Educational Needs and Disability)

The school policy for Special Educational Needs is based upon the recommendations given in the Education Act's Code of Practice.

'A pupil has SEND if they have a learning difficulty or disability which calls for special educational provision to be made for them. Special educational provision is educational or training provision that is additional to, or different from, that made generally for other children or young people of the same age by mainstream schools.'

Most children will be effectively supported by the class teacher within the classroom setting. A few children may have needs which will require additional in-class support by our SENDCOs or other members of staff. In some instances, the school may request the additional advice and support from outside specialists, including the medical services, Speech and Language Therapists, School Support Service or Educational Psychology Service in order to effectively meet the needs of children with more complex difficulties.

The progress made by any pupil identified as having Special Needs will be monitored and regularly reviewed by the class teacher and discussed with the senior leaders and the SENDCOs. Throughout the review process, parents will be fully informed and consulted about decisions affecting their child.



Our Aims for Good Behaviour

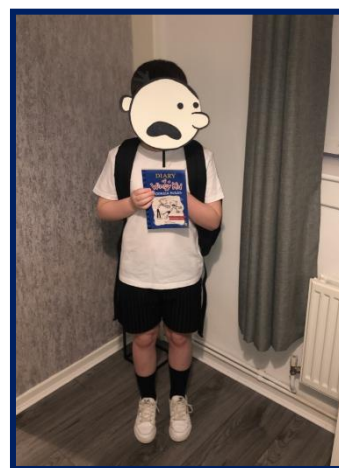
Our aims at Whingate Primary are for all children to be happy and successful. We will create a safe, caring and friendly environment in which every member of the school community has the opportunity to fulfill their potential, both personal and academic.

Everyone has the right to	Everyone has the responsibility to
Be safe...physically and emotionally.	Keep others safe from harm.
Feel secure...to succeed and to fail.	Allow others to work and achieve.
Achieve...to feel good, happy, and successful.	Value others and oneself.
Be valued...to feel important.	

A full Behaviour Policy is available on request from the School Office if you wish to read more. It is also published on the website.

Fundraising

The Staff, parents and friends support the school through organising events for children which provide enjoyable activities and generate extra funding for the children in school.



After-School Activities

Typical clubs are art, cooking club, multi-skills, athletics, football, netball, library, ukulele, chess, timetables club. These clubs are updated termly and some are charged per session.



Organisation of our School

Whingate caters for girls and boys aged 3+ in the Nursery and aged 4 to 11 years in school. Whingate is large for a primary school and has two classes in each year group.

The Management of the school:

The Co-Headteachers are supported by an Assistant Headteacher and a Senior Leadership Team. These senior staff manage all aspects of the day-to-day running of the school. Each class has a qualified teacher and each teacher has one or more support staff to help meet the needs of children.

The Governing Body

The school has 10 Governors, comprising the Co-Headteachers, 1 appointed by the local authority, 1 voted by staff, 3 voted by parents and 3 co-opted.

A Governor's term is 4 years and all parents are informed when a Parent Governor vacancy arises. The Governors make decisions about the strategic direction of the school, including the planning of the school budget. The Governors' role is to support the School Management Team in maintaining and raising the standards in the school.