



Letters and symbols scattered on the right side of the page, including:

h G b v
t h y a
x cr u
A n se Q i a
N
m

The background of the cover is an abstract painting. The top half features broad, horizontal washes of yellow and light green, suggesting a sky or a distant horizon. The bottom half is a deep, dark purple, almost black, with numerous faint, concentric circles and swirling lines drawn in a lighter purple or white, resembling ripples in water or a textured surface. The overall effect is dreamlike and atmospheric.

THE RED TREE

shaun tan







sometimes the day begins
with nothing to look forward to



and things go from bad to worse

darkness

overcomes you



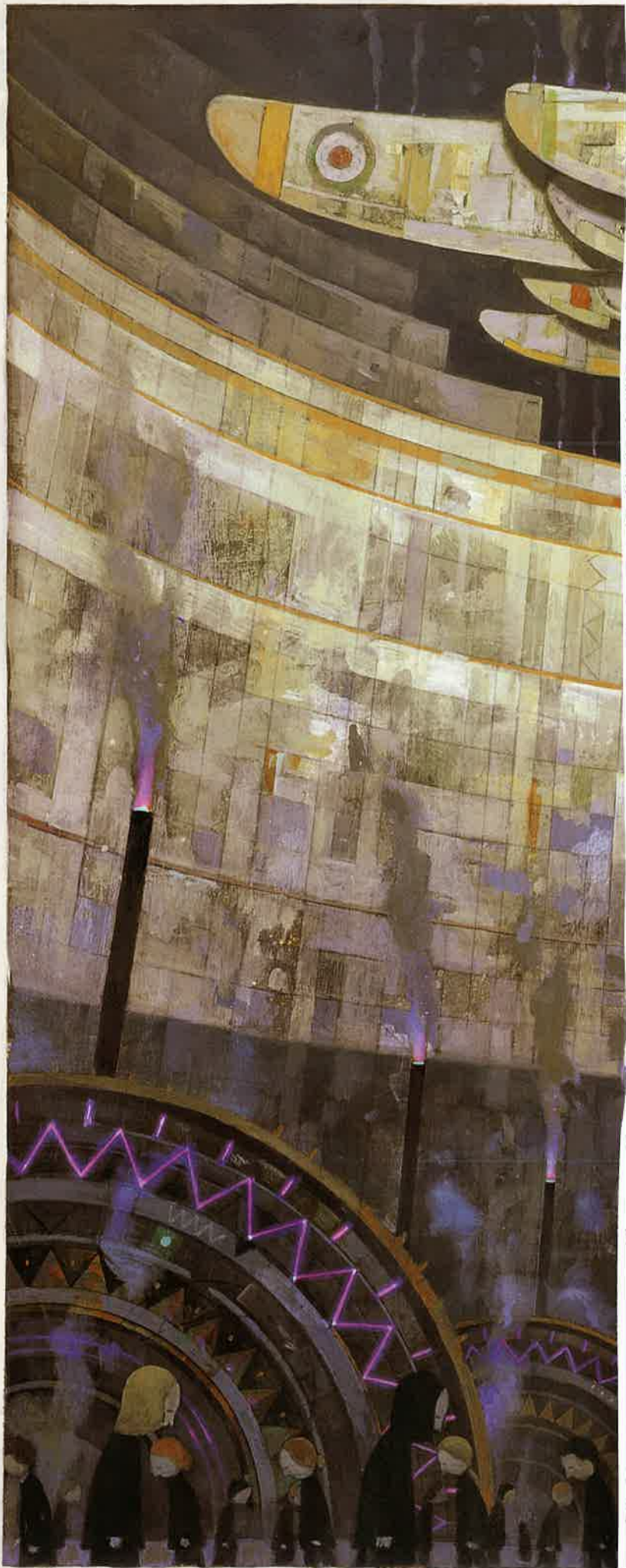






nobody understands

the world is a
deaf machine









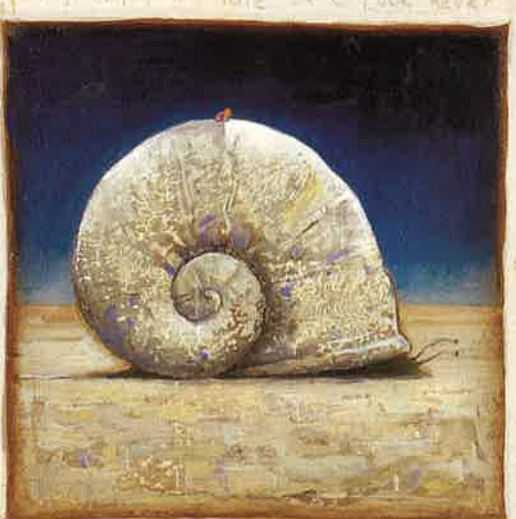
sometimes you wait



and wait



and wait



and wait



and wait



and wait



and wait



but nothing ever happens

then all your troubles come at once





wonderful things
are
passing

you

by





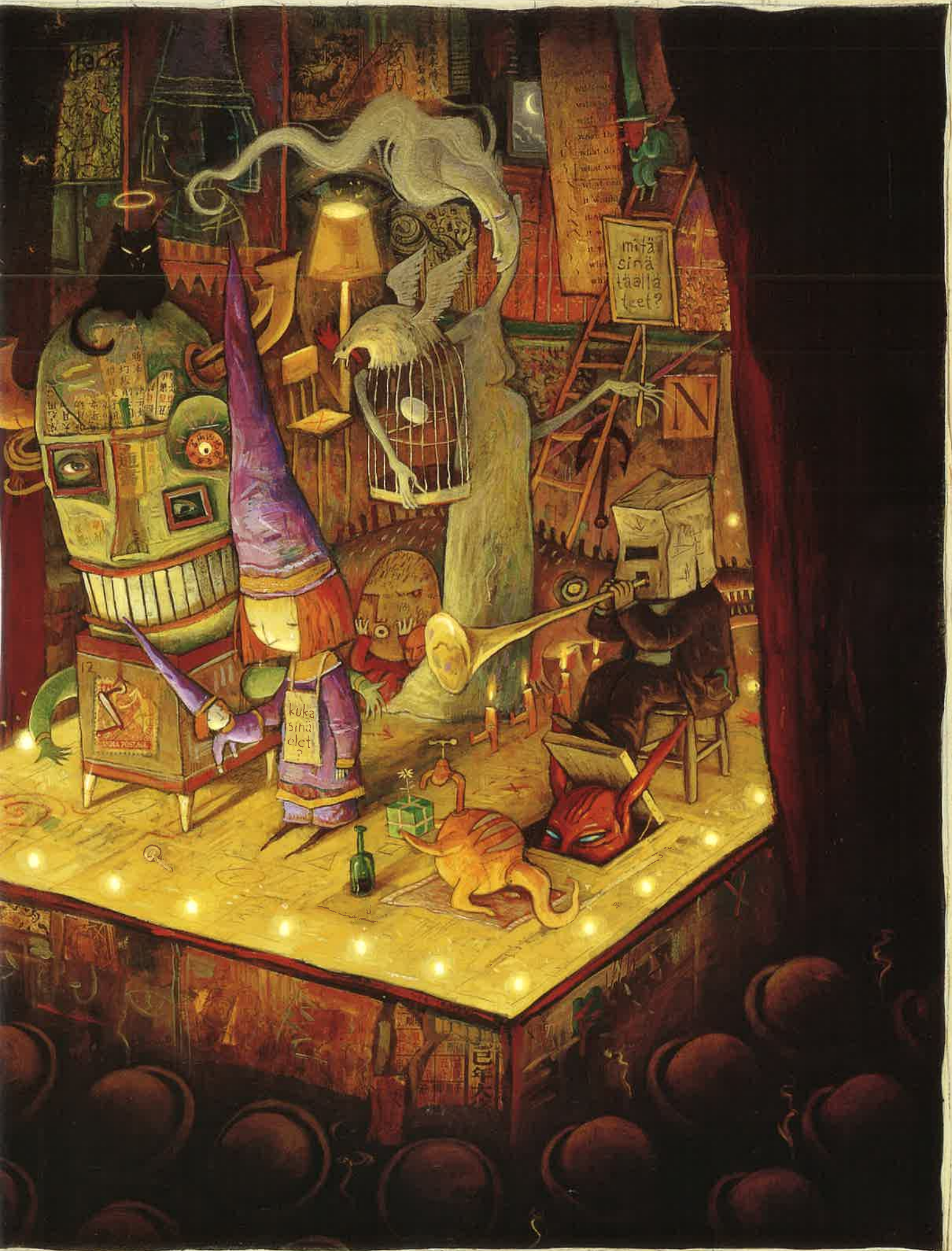




terrible fates are
inevitable

sometimes
you just **don't** know
what you are
supposed to
do





or

who

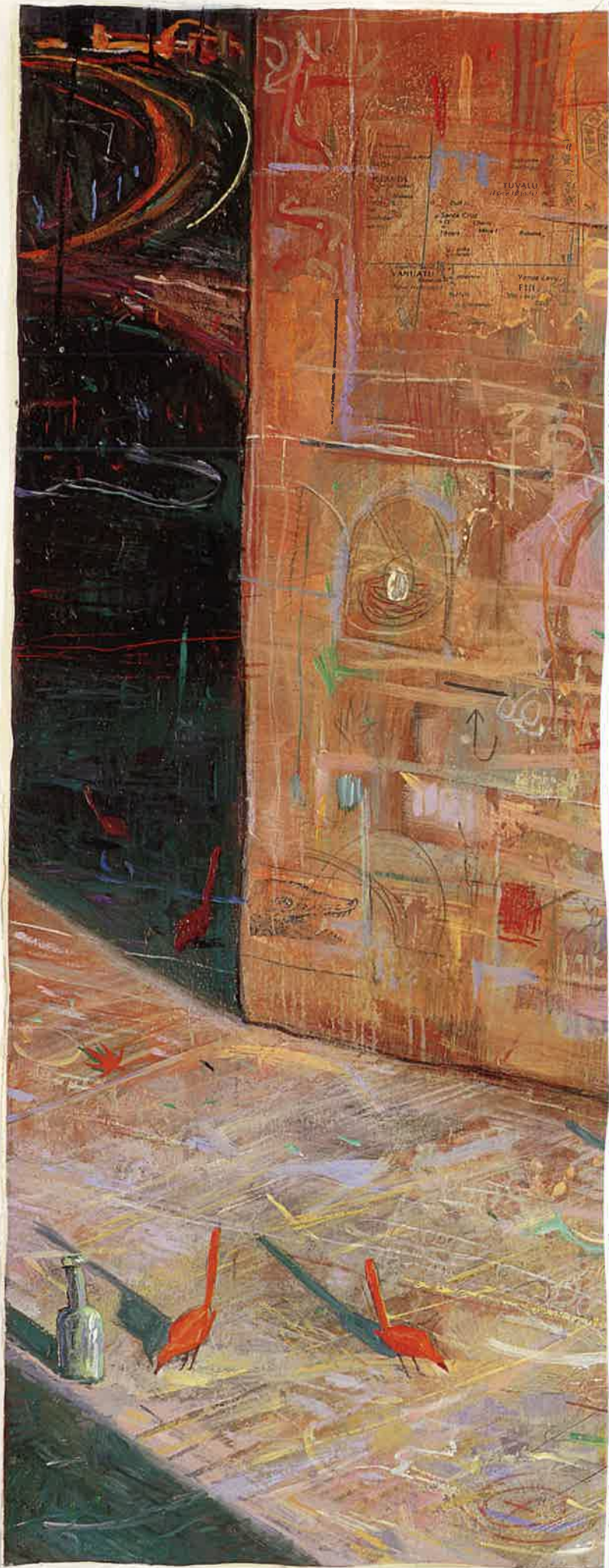
you

are

meant

to

be





or
where
you are

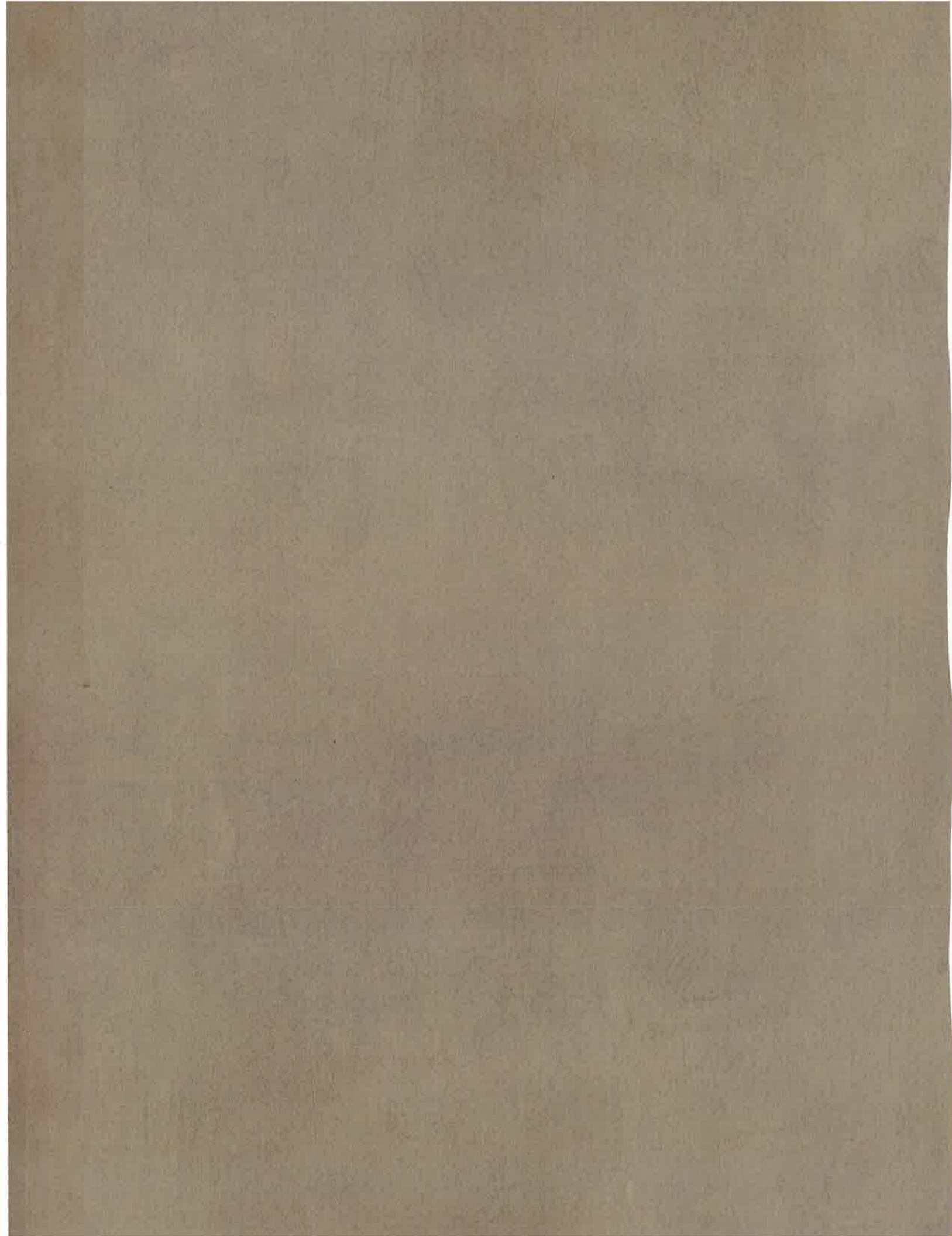




and the day seems to end
the way it began



but suddenly there it is
right in front of you
bright and vivid
quietly waiting





just as you imagined it would be





